

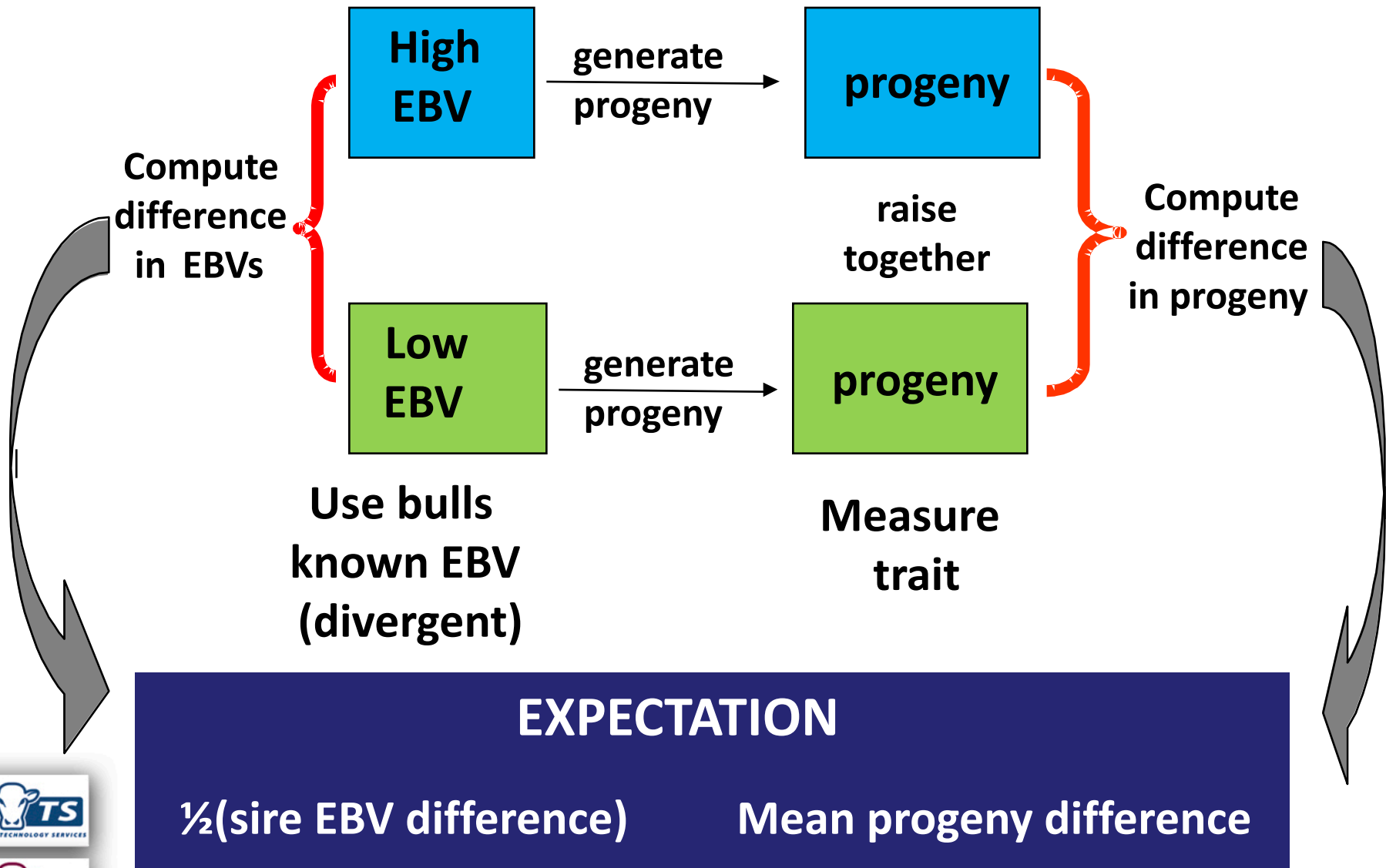
Do EBVs Really Work?

What do we expect when using sires with different EBVs?

What differences in progeny performance do we observe?



Evaluating EBVs



Brahman BIN Project

- 27 bulls joined in December 2010
- Purebred and cross bred (>62.5%) Brahman females
- 491 progeny (Av. 18 per sire) born Aug/Sept 2011 across 3 different properties
- Calves recorded for :
 - Birth Date
 - Birth Weight (Belmont)
 - Calving Ease
 - 200 Day Weight
 - 400 Day Weight
 - 600 Day Weight
 - P8 fat, Rib Fat, EMA
 - Flight Time
 - Ovarian Scanning
 - Structural Scores (feet, legs, navel, sheath)
 - Tail Hair for DNA



Banana Cooperator Herd – Steer Performance

200 Day
Weight

Bottom 5 Sires



Top 5 Sires



Expect
12.5 kg

Breed Av 2011 born animals +18
Round 1 BIN sires +24



207 kg

11 kg
difference



218 kg

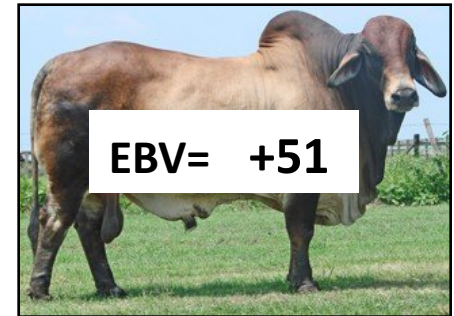
Banana Cooperator Herd – Steer Performance

400 Day
Weight

Bottom 5 Sires



Top 5 Sires



Expect
17.5 kg

Breed Av 2011 born animals +25
Round 1 BIN sires +33



240 kg

17 kg
difference



257 kg

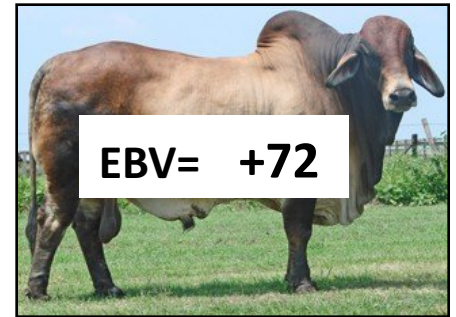
Banana Cooperator Herd – Steer Performance

600 Day Weight

Bottom 5 Sires



Top 5 Sires



Expect 23.5 kg

Breed Av 2011 born animals +34
Round 1 BIN sires +49



377 kg

27 kg
difference



404 kg

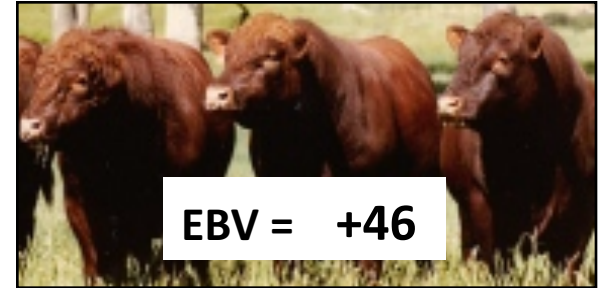
Durham Shorthorn Trial

Carcase Weight

Bottom 5 sires

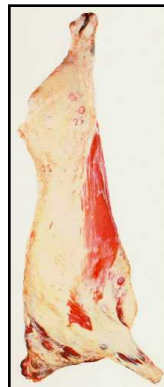


Top 5 sires



Progeny out of Shorthorn cows managed the same

Expect 14 kg



322.8 kg

13.4 kg
difference

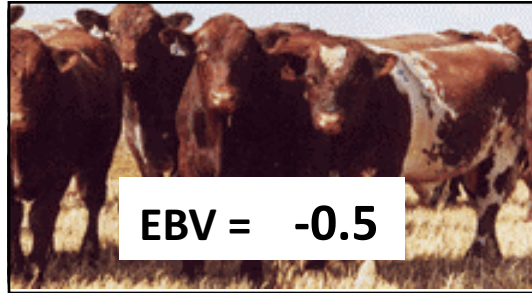


336.2 kg

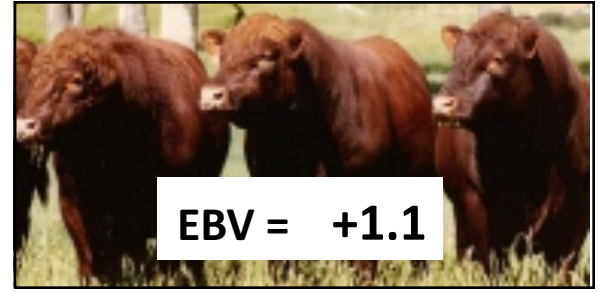
Durham Shorthorn Trial

IMF

Bottom 5 sires

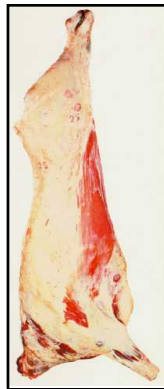


Top 5 sires



Progeny out of Shorthorn cows managed the same

Expect 0.8 %



0.6 %
difference

